

Chorley
Council

Planning
Committee Meeting

21 December 2021



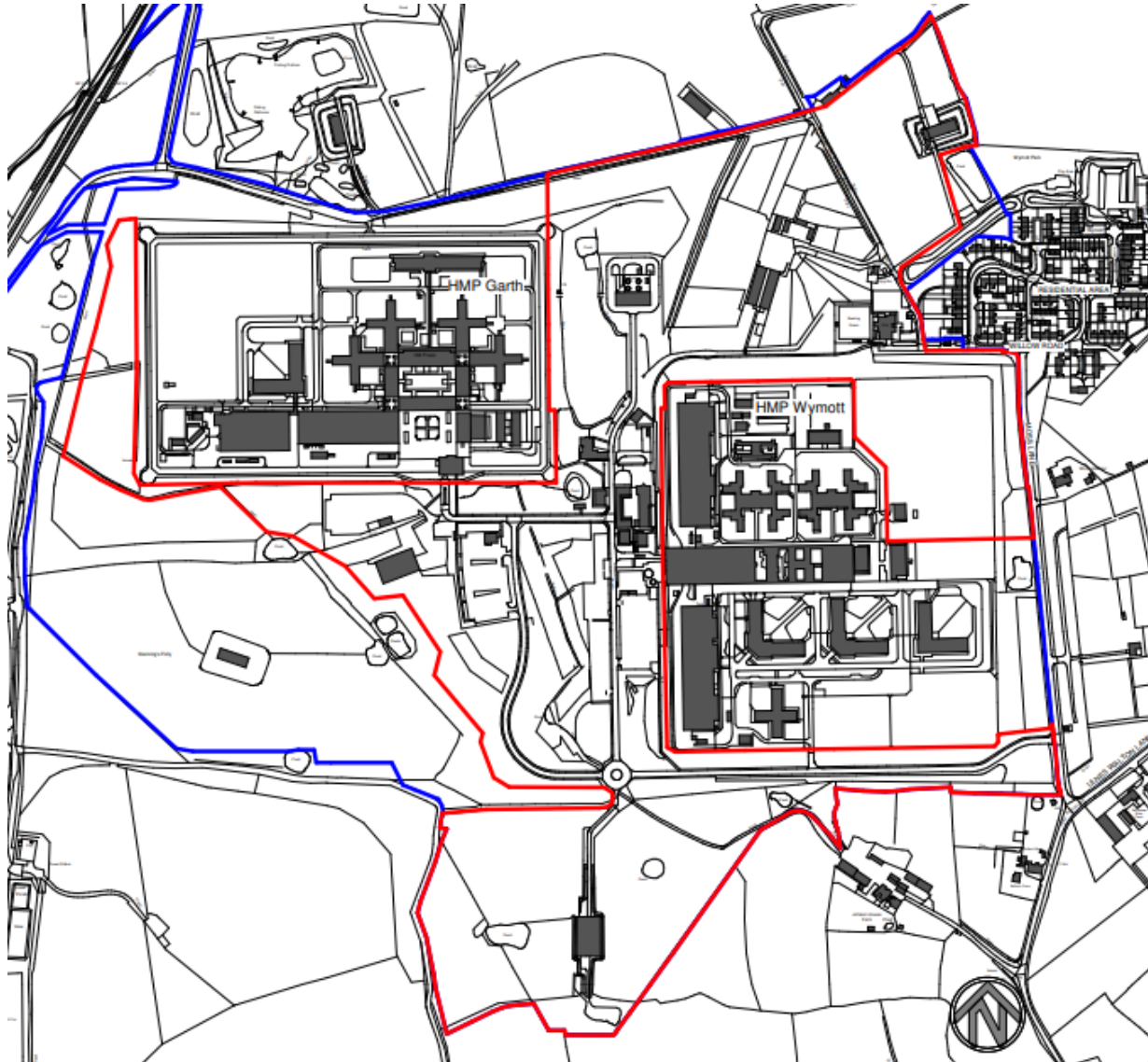
Item 3a

21/01028/OUTMAJ

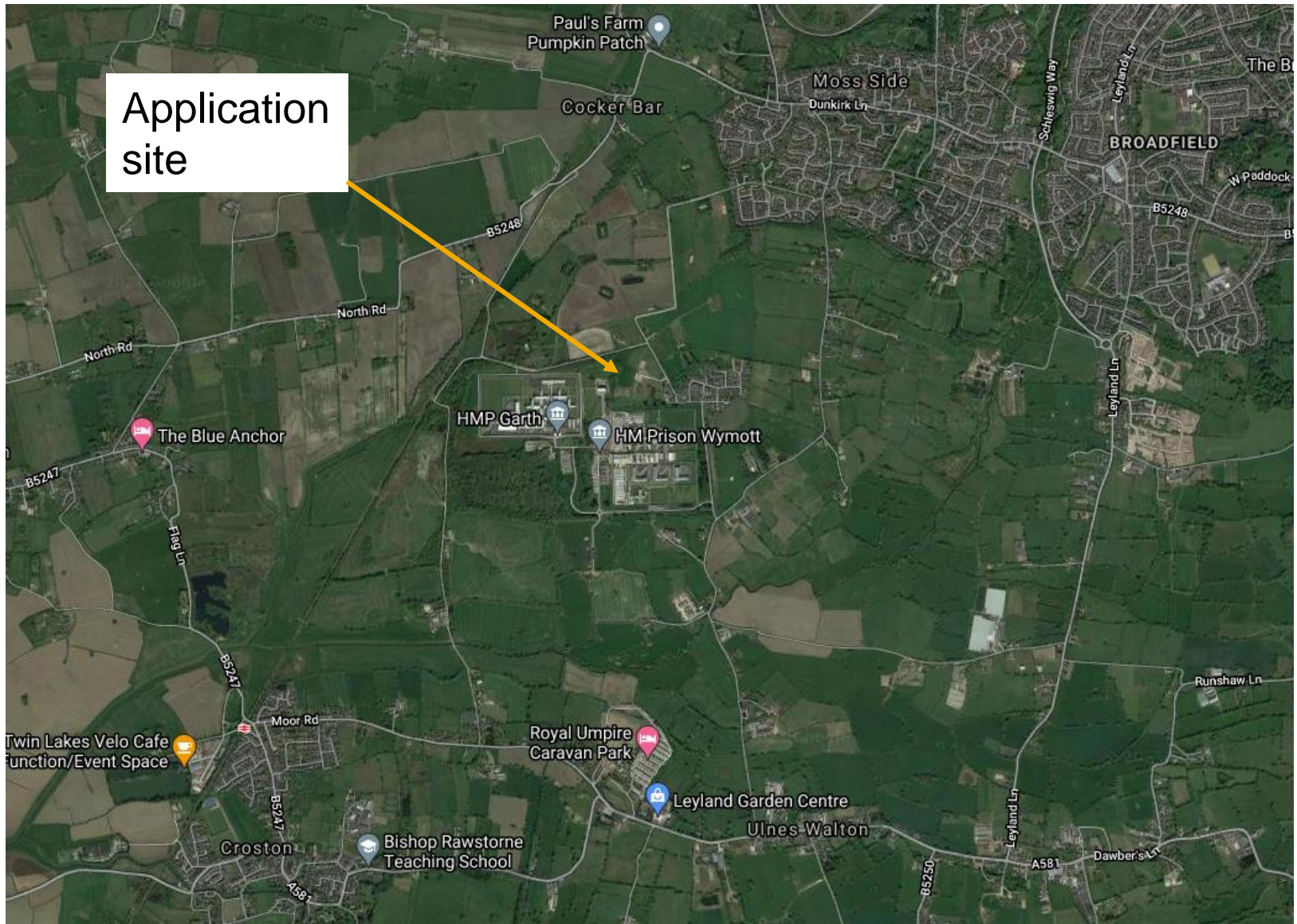
HM Prison Wymott, Moss Lane, Ulnes Walton

Hybrid planning application seeking: Outline planning permission (with all matters reserved except for means of access, parking and landscaping) for a new prison (up to 74,531.71 sqm GEA) (Class C2A) within a secure perimeter fence following demolition of existing buildings and structures and together with associated engineering works; Outline planning permission for a replacement boiler house (with all matters reserved except for access); and Full planning permission for a replacement bowling green and club house (Class F2(c)) on land adjacent to HMP Garth and HMP Wymott, Leyland

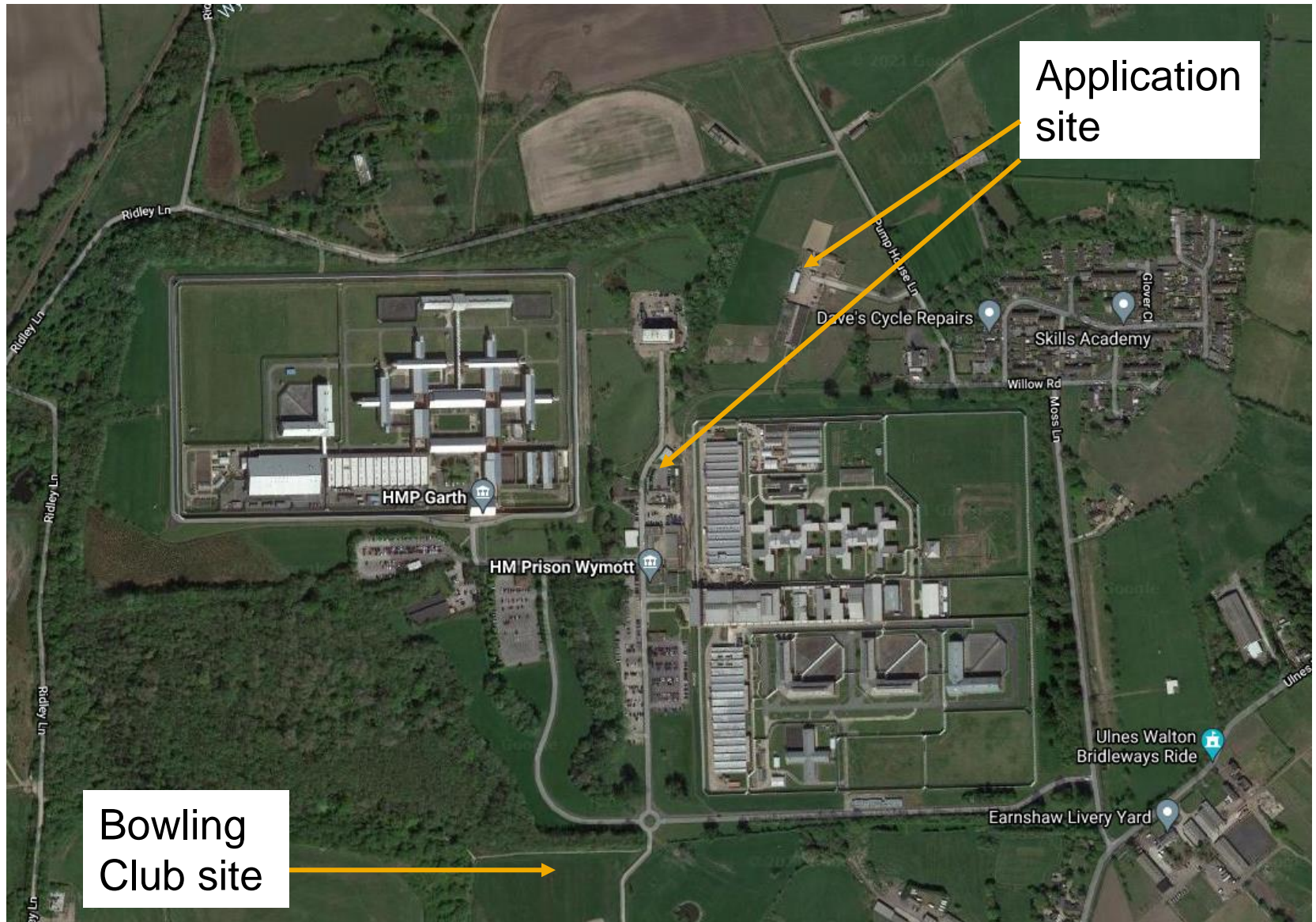
Location Plan



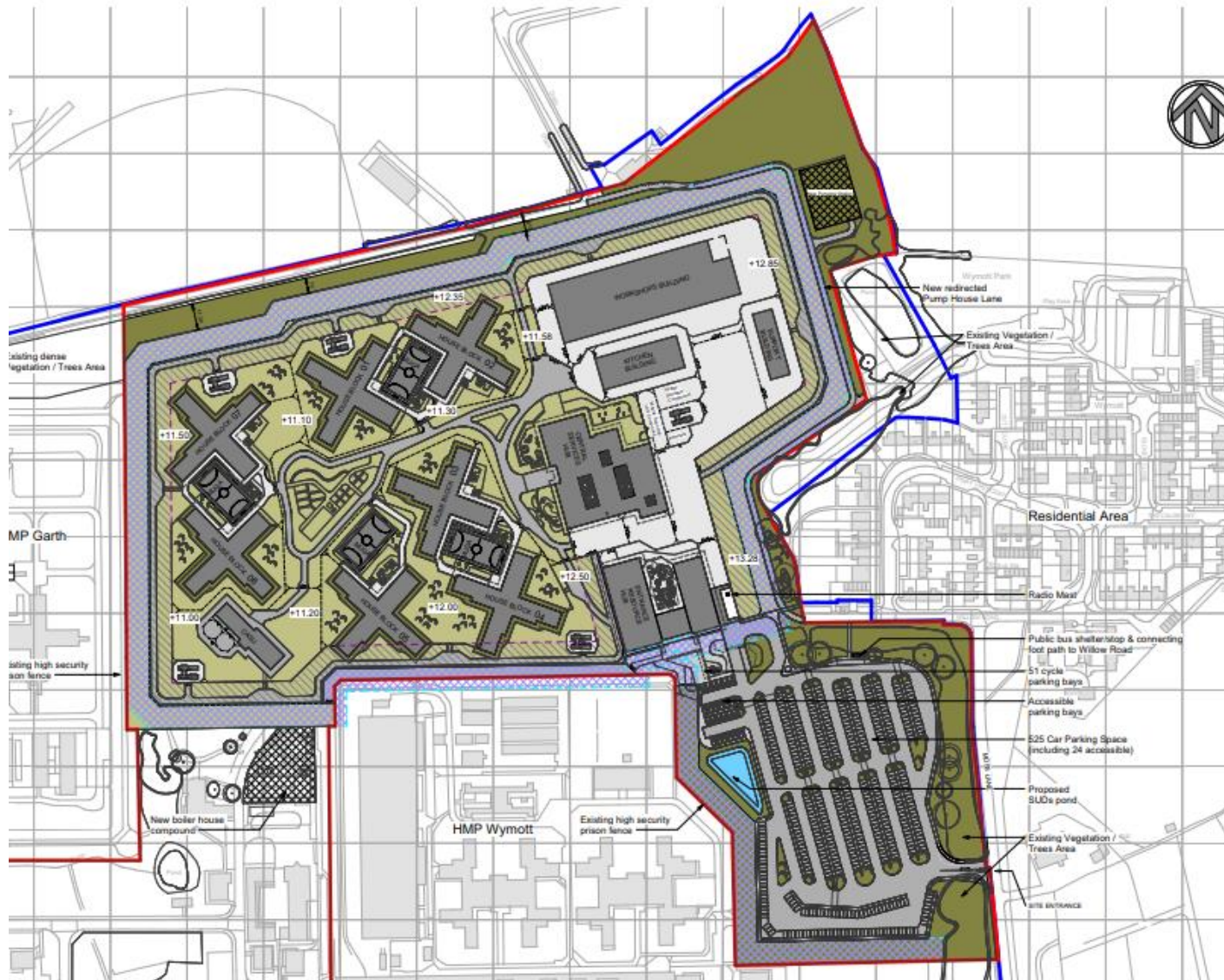
Aerial photo



Aerial photo



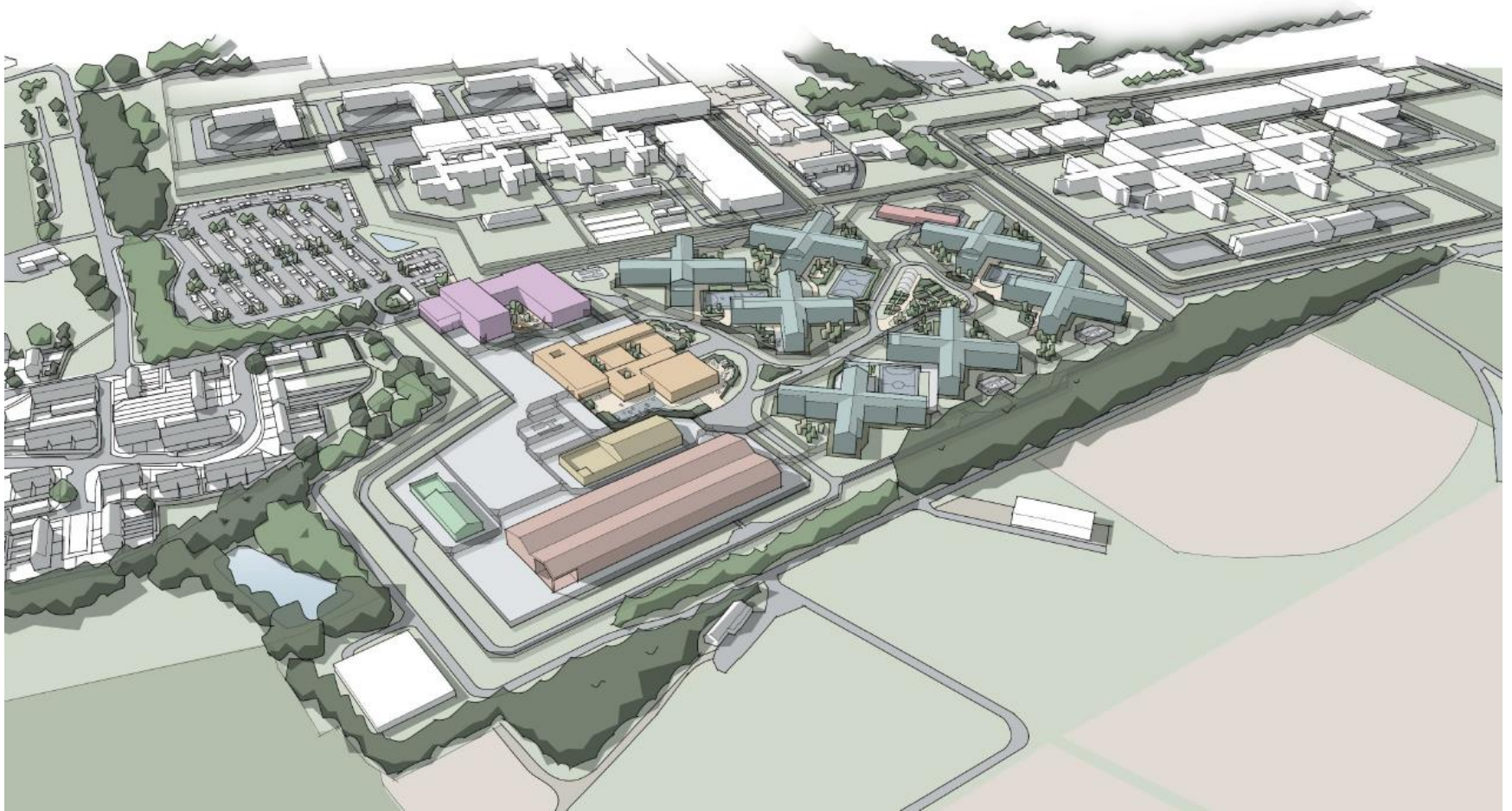
Prison Site plan (Indicative)



Proposed landscaping



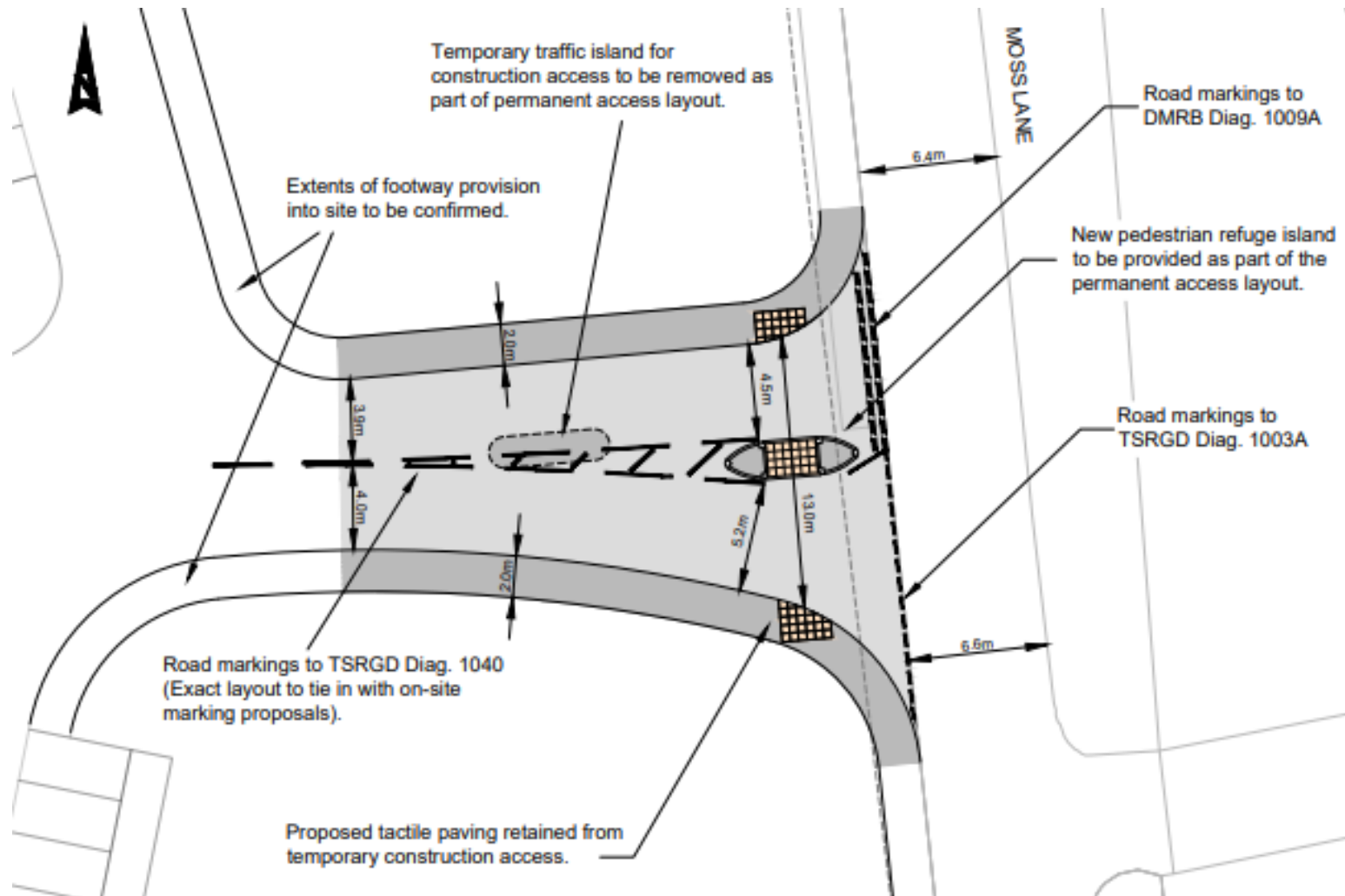
Proposed prison CGI



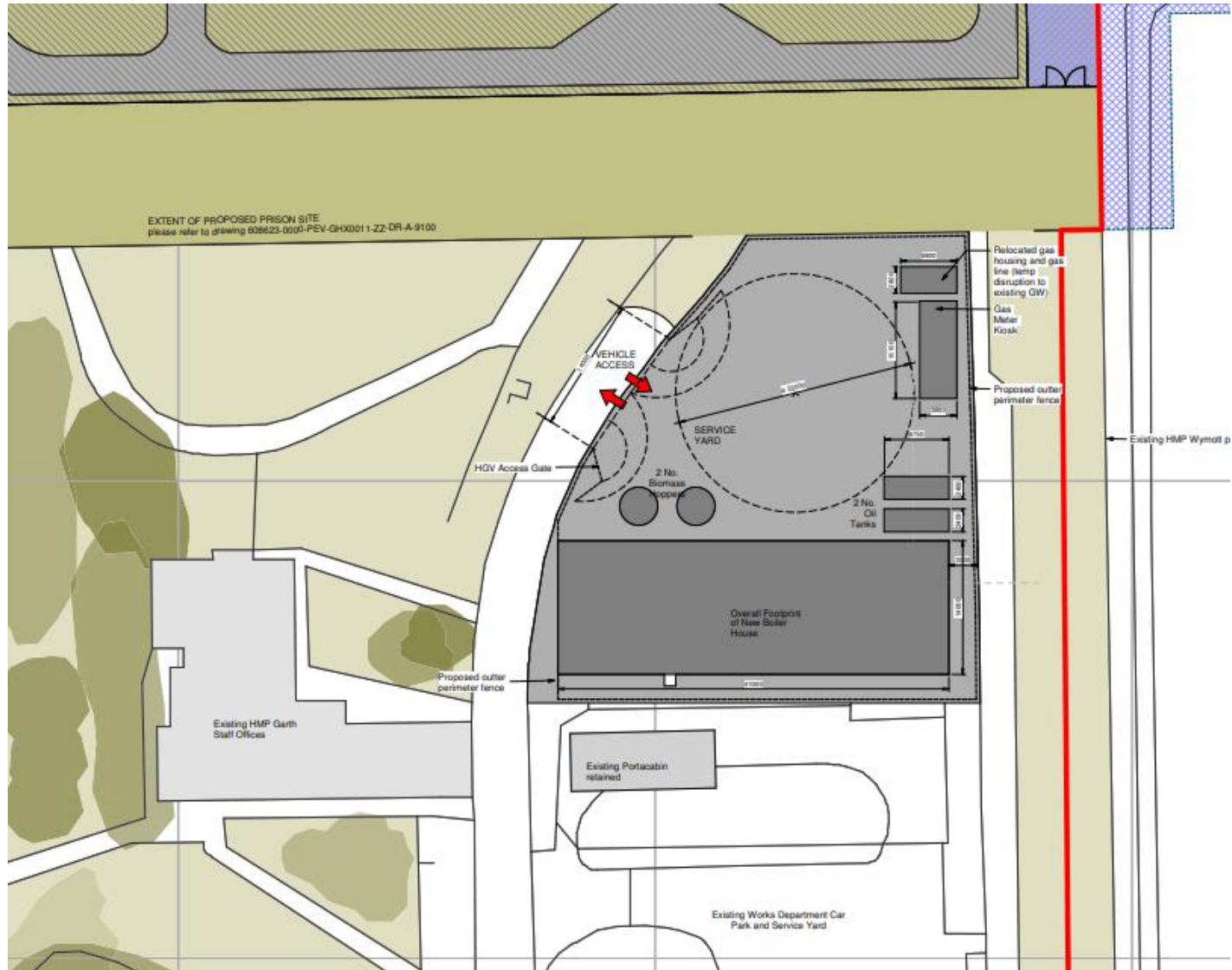
Pedestrian approach sketch CGI



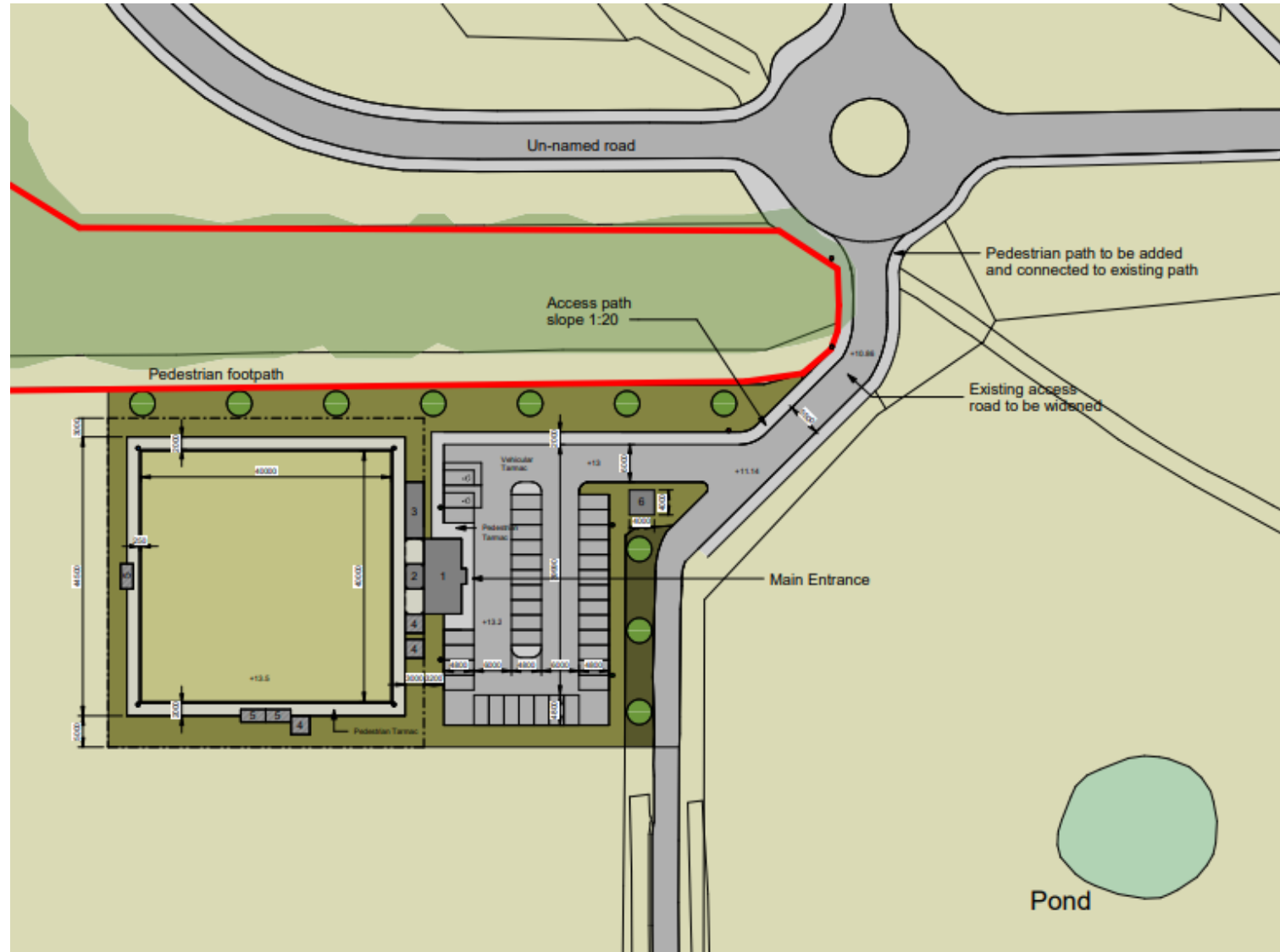
Proposed access to Moss Ln



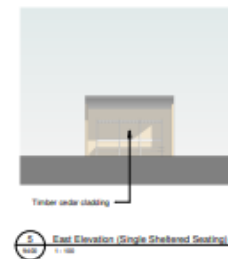
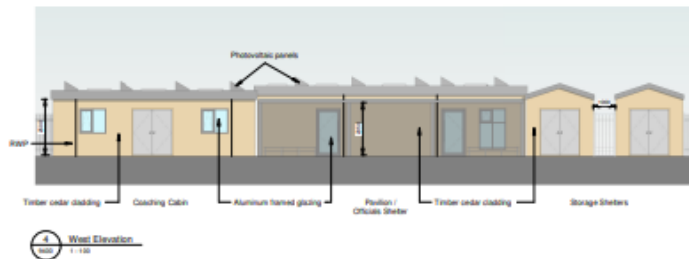
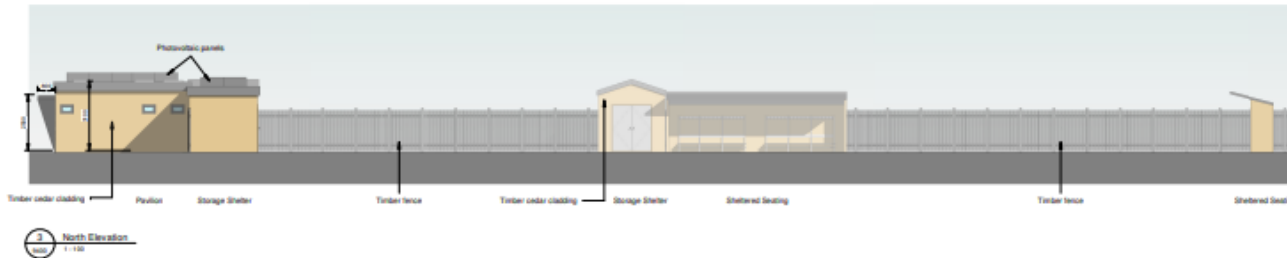
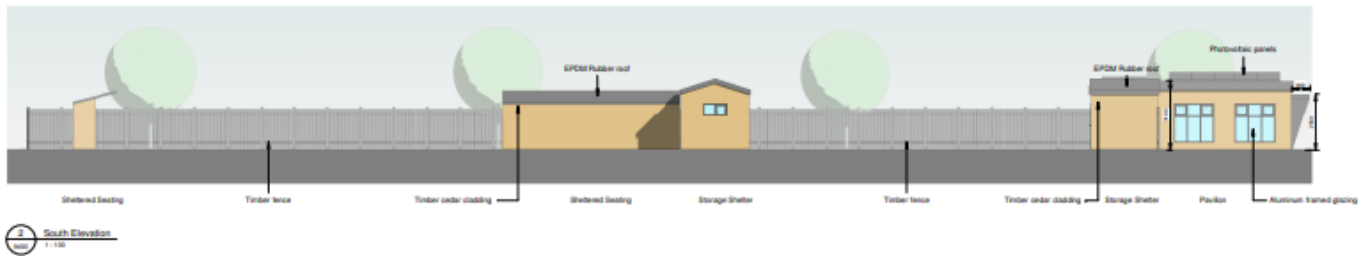
Boiler House block plan (Indicative)



Bowling club site plan



Bowling club elevations



Bowling club CGI



View of main access from the car park



View of main access from the car park



General view of the proposal from the East



View of main Coaching Cabin, Pavilion/Officials Shelter and Storage Shelter



General view of the proposal from the West

Site photo – Boiler house



Site photo



Site photo north and east tree belt



Site photo



Site photo – bowling club



Site photo – Former prison officers club



Former officers club and land beyond



Pump House Lane



Site photo



Site photo – proposed bowling club site



Towards proposed bowling club site



Moss Lane and prison entrance



Position of proposed access opposite Windy Harbour

